

Hadogenes troglodytes
(Peters, 1861)

Ex.: ?

**Anatomy of an
adult female**

by Finn Schmitz

Habitus (measurement unit: cm)

a) dorsal view



b) ventral view



Chela

a) dorsal



b) ventral



c) lateral



Pectines



Spiracles



Metasoma

a) dorsal

I-II :



III-V:

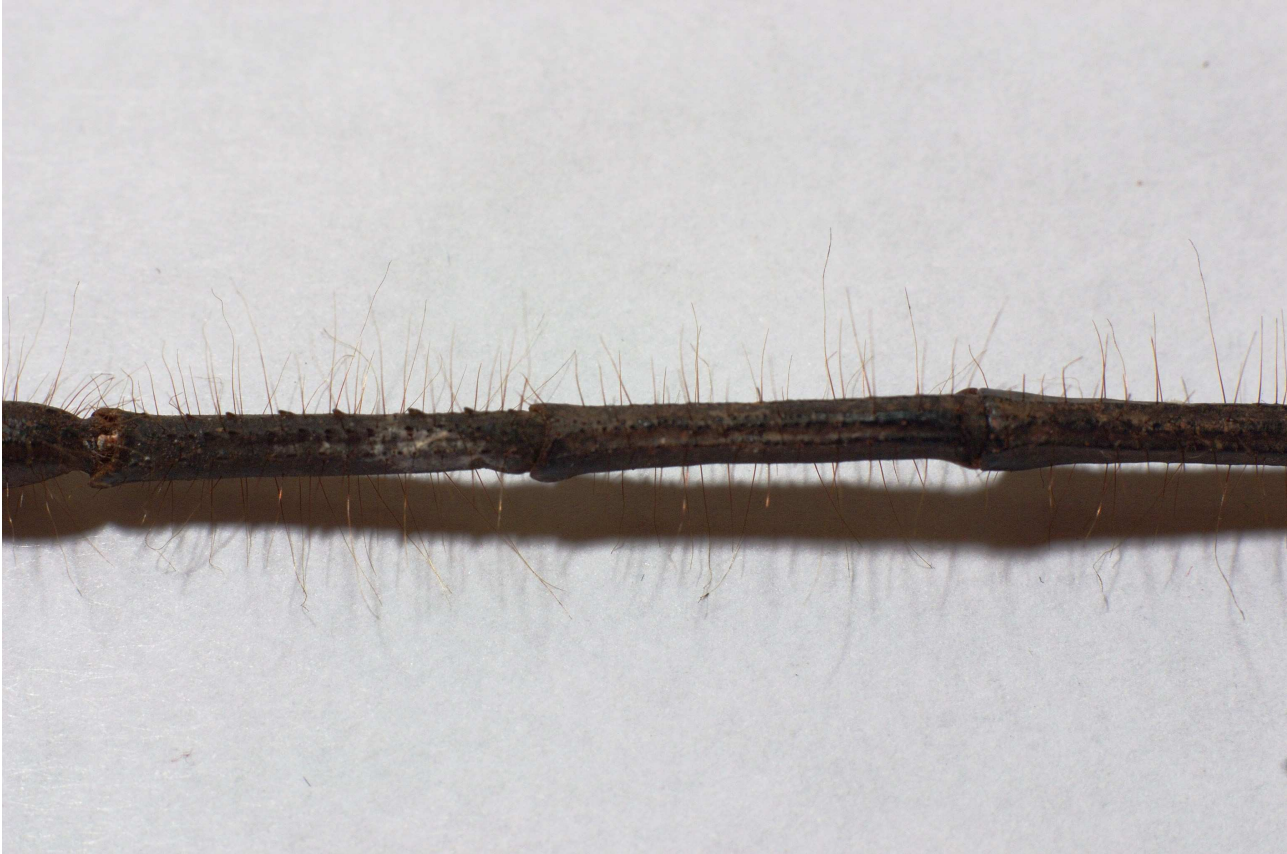


b) ventral

I-II:



III-V:



Telson



Prosoma

a) from different viewpoints



